

## HIGHLIGHTS

### Performance

- Faster application response time
- Reduced application runtime

### Availability

- Superior application resiliency
- 99.9999% Uptime

### Simplicity

- Easier deployment
- Better response to business needs

### Affordability

- Lower operating costs

# VIOLIN QV2020

Simple, Fast, Affordable High Performance Storage Platform



### True Active/Active Controllers

- Increase uptime: No waiting in the event of a failover
- Increase performance: Use both controllers to read and write data to a LUN or volume

### Performance-Optimized Deduplication

- Selectable Dedupe by volume

### Enhanced Matrixed RAID Data Allocation

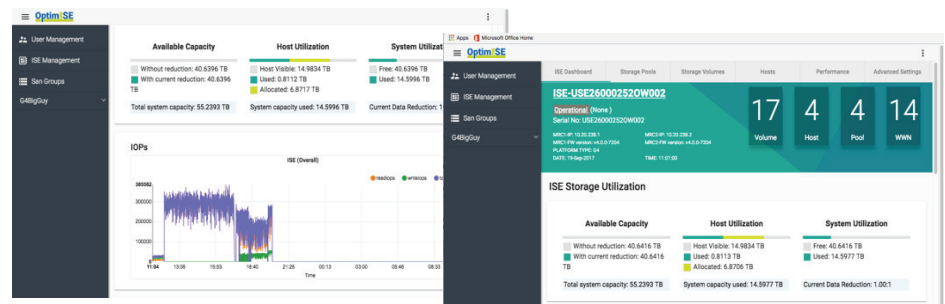
- Up to 24 individually hot-swappable NVMe SSDs
- Writes to SSD's balanced across drives for better performance and wear

### Software for Resilient In-place Media Loss

- Less frequent drive replacement
- Global parity and spare allocation
- Failed drives do not have same urgency for replacement as traditional arrays

### Web-based Management Interface

- Simplified management with MAESTRO
- Support for multi-system management through single session
- At-a-glance and in-depth performance metrics
- Customizable widget-based layout



### Data Protection

- Always shipped with 256 bit AES Encrypted Drives
- Keep your data safe at no extra cost

## Enterprise Data Services

- ✓ Data Reduction by Volume
- ✓ High Availability
- ✓ Snapshots
- ✓ Replication
- ✓ QoS
- ✓ Encryption
- ✓ Management REST API
- ✓ Simple Web-based Management
- ✓ Monitored Telemetry
- ✓ Predictive Analytics

### VIOLIN QV2020 PRODUCT SPECIFICATIONS

Performance <1ms LATENCY @ 500,000 IOPS

Bandwidth (max) 7.1 GB/sec

#### CAPACITY

Usable (max) (min 12 drives) 15 TB to 479 TB (max 24 drives)

Effective (max)\* 60 TB to 1.7 PB

#### CONNECTIVITY

Hosts 2U Dual-Controller Active/Active  
16Gb FC – 4 ports per controller  
10/25Gb iSCSI

#### PHYSICAL

Dimensions 2RU — 3.4" x 16.88" x 33"  
Rail kit supports 20" to 28.5" rack depth

Weight 64 lb. / 29.1 kg — (without drives)

Power & Cooling Two hot-swappable 2000 Watt PSUs, 12V output @ 130A (2000watts)  
Auto ranging 200-240VAC, 50-60Hz input. Current sharing,  
C14-C15 Connectors  
Operating Watts/Volts/Amps and Operating Temp F/C

\*Effective capacity assuming 4:1

Contact us for more info!

**keepertech** technology  
access | manage | protect  
571 333 2725  
solutions@keepertech.com | www.keepertech.com

Authorized Reseller

